

Product specs

Receiving card R501

V4.0 20180910

Features

R501, has on-board 12*HUB75E, fully compatible with the R500 function, equivalent to R500 plus HUB75E.

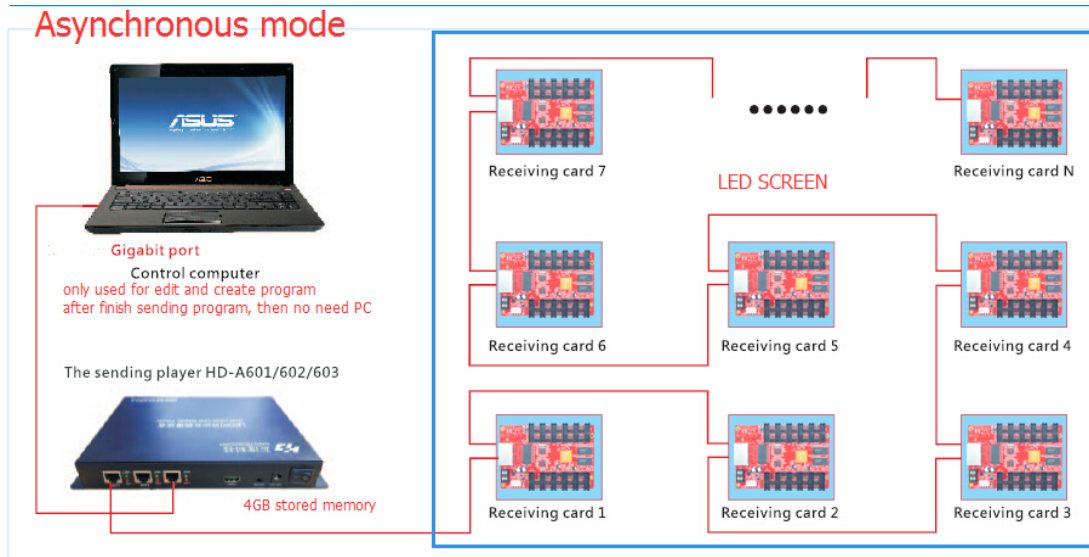
Parameters

Fit for sender	A60X serials player box, AX0, CX0 serials Async sending card, T901 sync sending card
Module type	Compatible with indoor and outdoor full color and single color module; Support MBI5041/5042、MBI5050、MY9221、MY9268 etc. PWM IC
Scan mode	Supports any scanning method from static to 1/32 sweep
Communication method	Gigabit Ethernet
Monolithic receiving card loading range	Recommend: 256*256 pixels MAX: 130,000 dots, which is 1024*128
Multi-card connection	Receiving card can be put in any sequence, can be automatically identified by software or manually set the connected position; Nanosecond synchronization between card and card.
Gray scale	0-65536
Smart setting	A few simple steps to complete the smart settings, through the screen layout can be set to go with any alignment of the screen unit board
Test functions	Receiving card integrated screen test function, by pressing the self-test button to achieve red, green, blue, white, grayscale, slash, grid, etc, a variety of test modes.
Blanking circuit	Support
Communication distance	Super Cat5, Cat6 network cable within 150 meters
Port	2pin 5V Power x1, 1000M Ethernet port X2. 12 group of HUB75E
Input voltage	4V-6V
Working temperature	-20°C to 85°C

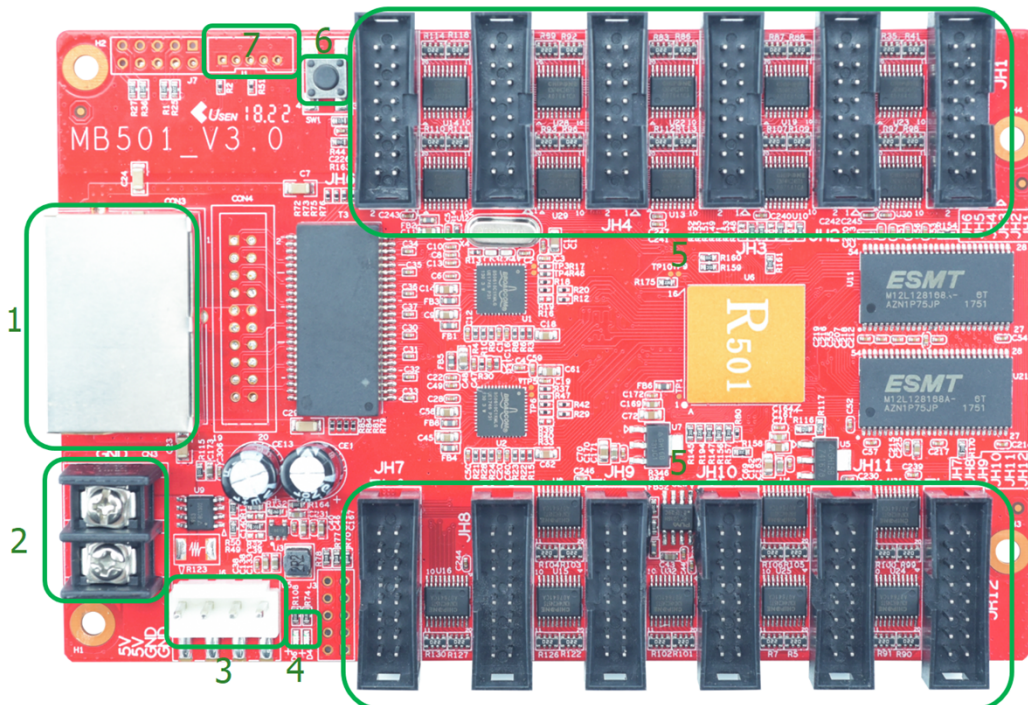
Connection method

Make player box **A60x** for an example.

Player box A60x connecting with receiving cards:



Appearance Description



- ①: Gigabit Ethernet port, used to connect the player box or another receiving card, the same two network ports are interchangeable;
- ②: Power interface, can be accessed with 4.5V ~ 5.5V voltage;
- ③: Power interface, can be accessed with 4.5V ~ 5.5V voltage; (②,③ connect one of them is ok.)
- ④: Light D4 normal working state is blinking, indicating that the control card normally running; Light D6 normal working state is blinking faster, indicating that Gigabit has been identified, is receiving data.
- ⑤: 12 group of HUB75E, to connect with screen connector.
- ⑥: Test button, after adjusting the screen, once click each time, screen will show followed by red, green, blue, white, slash test .(If the configuration parameters saved on the card and the screen matched, need unplug the network cable, then the test button will work)
- ⑦: External indicator light, run light and data light.

Interface definition

